



ENGINEERED SOLUTIONS, LASTING PARTNERSHIPS

2024

Marine Product Catalogue

www.artesinc.com



AR | ARTES

INDEX

1 ————— ARTES

3 ————— Valves

7 ————— Pumps + Pump Parts

9 ————— Expansion Joints

11 ————— Instrumentation

Engineered Solutions, Lasting Partnerships



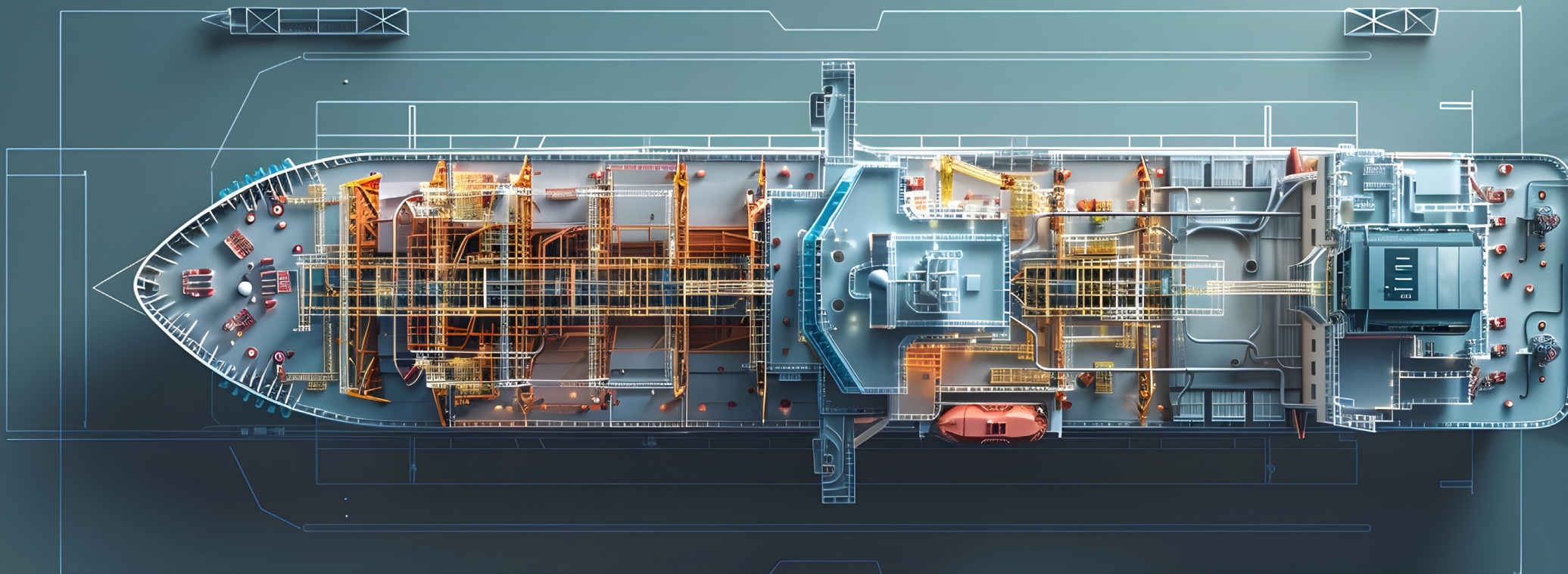
WE ARE

A Canadian owned and operated company with over 50 years of business history and impeccable record in Customer Service.

ARTES has partnered with several internationally reputed Manufacturers of fluid control products including ARFLU SA of Spain for Marine Valves specifically catering to the Canadian Marine, Ship Building, Naval and Repair Markets.

Industrial manufacturer and distributor
of fluid control products since 1967.

est. 1967



MISSION

To deliver innovative and reliable engineered solutions that enhance the efficiency and sustainability of our clients' operations, while maintaining the highest standards of quality and customer service.

VISION

To be a global leader in specialized engineered solutions, recognized for our technological advancements, exceptional customer service, and commitment to sustainable practices.

Valves

To ensure optimal function and service life, it is critical to choose the right valve type in the right materials. ARTES has partnered with ARFLU SA of Spain to offer an extensive range of valves for the Marine market. In this section, we have selected a few specific valves to help you understand our product range .



NO. CODE 1448 B AND 1527B

With over 40 years in the field of marine valves, ARFLU SA valves are subjected to arduous testing procedures to ensure the highest level of reliability, durability, and integrity.

21

21 Navies World Wide

Non-Ferrous Valves for
Saltwater Service

Specialized Engineering
Application

Passed Crash Test for
Shipping Companies

Passed MIL-S-901D
Class 1, Grade A



Lube Oil ,
Fuel Oil Filling System,
Bunker Tanks

Boiler Feed Water,
Compressed Air System,
Control Air System

Fire Suppression &
Prevention Systems

HT Cooling Systems,
Cooling Sea Water Pump
Suction & Discharge

Water Intake Drain Systems

Water, Wastewater,
Drain & Discharge Systems

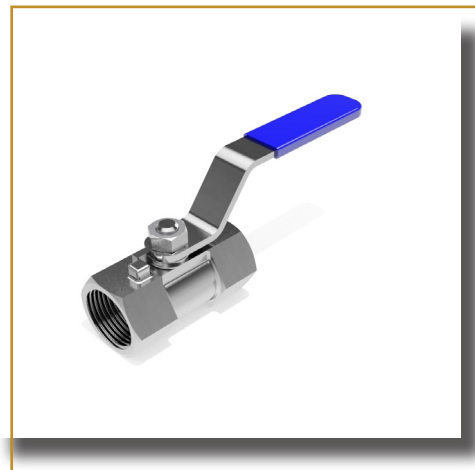
Air Valves



Butterfly Valves



Ball Valves



Check Valves



Gate Valves



Globe Valves



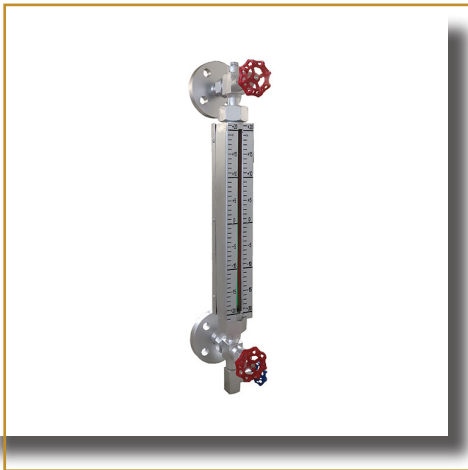
Overboard Spring
Loaded Globe Valves



Safety Valves



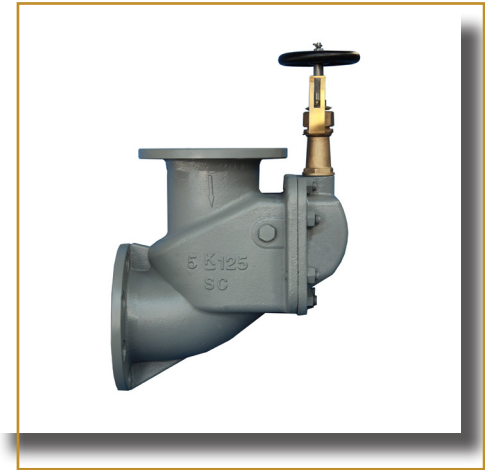
Level Gauges



Quick Closing Valves

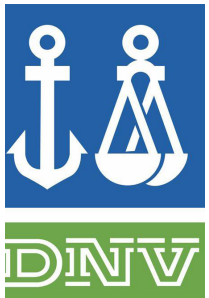


Storm Valves



Expansion Joints + Hose

Designed for flexibility and resilience. Built to accommodate movement, absorb vibrations, and mitigate stress on piping systems. Constructed from high-quality materials, providing essential support and reliability for your marine applications.



Type Approval

Cert No. TAD0001JX

ARTES places the highest priority on quality and product excellence.

With complete engineering and quality control support to ensure all requirements are met. Product is nationally registered and comes with appropriate tagging.

Chemical resistance at high temperatures and pressures

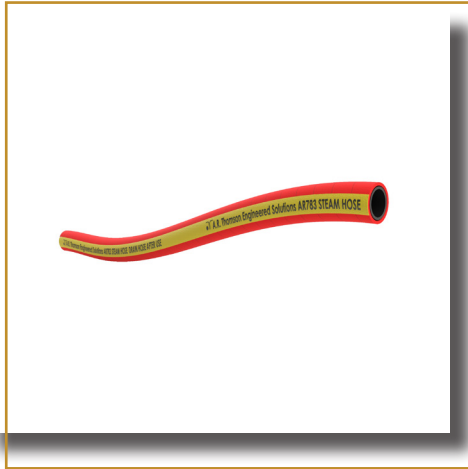
All directional movement

No gaskets required

Liner made of PTFE

Multiple arches available

Industrial Rubber Hose



Rubber Expansion Joints



PTFE Spool Type



Metal Braided Hose



Fabric Expansion Joints



HVAC Product



Pumps + Pump Parts

Engineered for reliability and efficiency, ARTES pumps are designed to excel in the harshest conditions.

Whether for ballast, bilge, or general fluid transfer, our pumps deliver unmatched durability and performance.

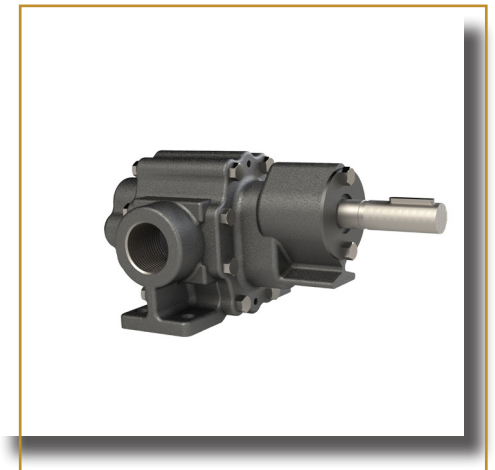
Built with cutting-edge technology and materials, they ensure smooth operation and longevity, supporting your marine operations with unwavering dependability.



ANSI/ API Pumps



Gear Pumps



Vertical and Sump Pumps



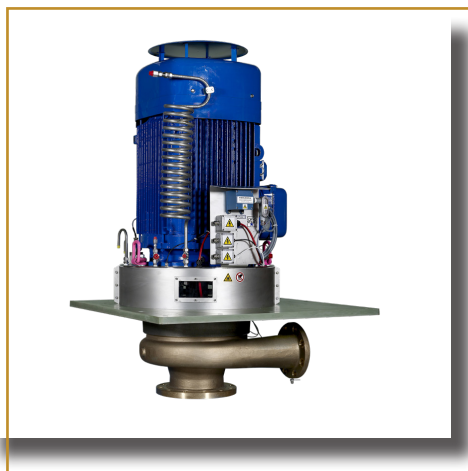
Magnetic Drive Pumps



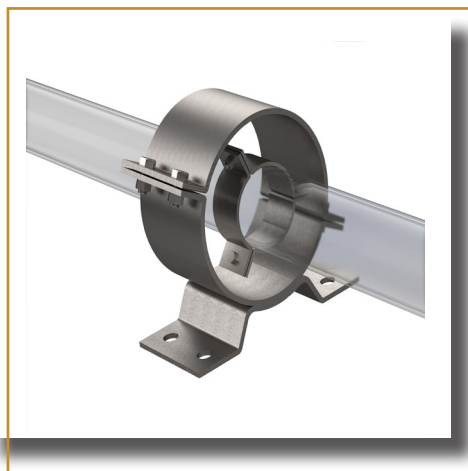
Fire Systems



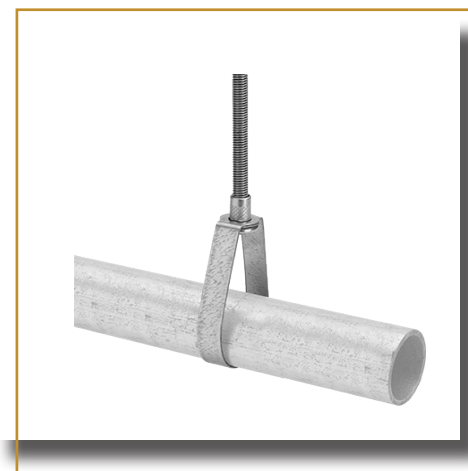
Cryogenic Pumps



Pipe Shoes and Guides



Pipe Support



Instrumentation

TANK LEVEL TRANSMITTERS

DRAFT MONITORING

VESSEL MANAGEMENT

Ballast Water

Brine

Fuel Oil

Preload

Fresh Water

Holding

Multiple Tank Level Display System



- Intuitive graphical operator interface
- 10.4-in. color LCD touch screen terminal
- Ethernet serial digital communications

Multiple Tank Level Indicator



- Monitors up to 8 tanks or draft points
- Displays tank level in units of volume
- Non-volatile memory retains capacity date

TANK LEVEL TRANSMITTERS



738 D/P
LiquiSeal
Purge Control



LevelWAV
Radar
Transmitter



788 D/P
Purge Control



Downpipe
Check Valve

- Engineered component to guard against liquid traveling up through the downpipe and the system pressure lines.



Marine Tank
Level Indicator

- Rugged stainless steel housing
- LED graphically displays draft or tank level
- Calibrated scale for reading volume and/or depth



Engineered Solutions, Lasting Partnerships

Alberta

Red Deer County
215 Clearsky Way
T4E 0A1
Phone: (403) 341-4511
Fax: (403) 341-4243

Fort McMurray
13-240 Mackay Crescent
T9H 5C6
Phone: (780) 790-0730
Fax: (780) 790-0278

Grande Prairie
118 - 11025 89 Ave
T8V 5B9
Phone: (403) 341-4511
Fax: (403) 341-4243

Leduc
108 - 3909 84 Ave
T9E 8M5
Phone: (403) 341-4511
Fax: (403) 341-4243

British Columbia

Surrey
3420 189 Street
V3Z 1A7
Phone: (604) 517-5599
Fax: (604) 517-5598

Ontario

Guelph
225 Hanlon Creek Blvd
N1C 0A1
Phone: (647) 466-4301
Fax: (519) 822-1128

Chile

Concepcion
Calle Cuatro #1953,
Parque Ind.
Phone: (564) 128-53903
